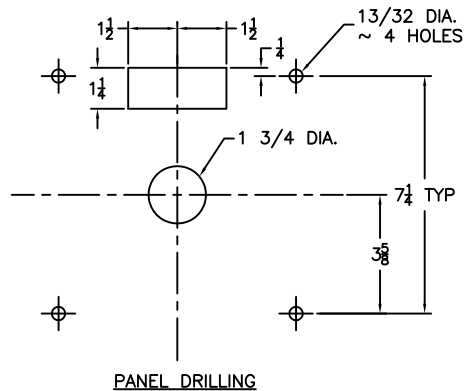
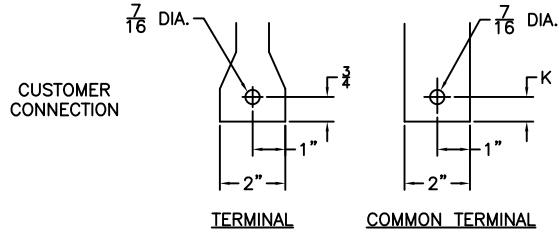
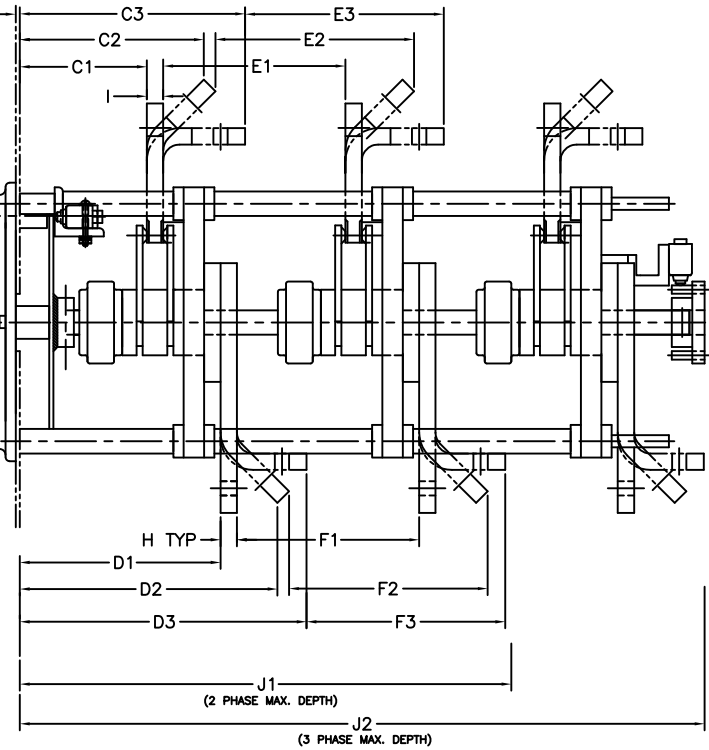


REF. CUSTOMER PANEL. PANEL SHOULD BE GROUNDED.
MECHANICAL INTERLOCK SEE PAGE 11 NOTE 1



BASIC SWITCH with STRAIGHT TERMINALS												
Amps	A1	B	C1	D1	E1	F1	G	H	I	J1	J2	K
800-1000	13 1/8	5 1/2	2 3/16	4 9/16	5 9/16	5 9/16	5 13/16	1/2	1/2	12 13/16	18 7/8	3/4

with AUXILIARY SWITCH	
J1	J2
13 1/4	19 3/8

MECHANICAL INTERLOCK with STRAIGHT TERMINALS												
Amps	A1	B	C1	D1	E1	F1	G	H	I	J1	J2	K
800-1000	13 1/8	5 1/2	3 3/4	6 1/8	5 9/16	5 9/16	5 13/16	1/2	1/2	14 3/8	20 15/16	3/4

BASIC SWITCH with 45° TERMINALS												
Amps	A2	B	C2	D2	E2	F2	G	H	I	J1	J2	K
800-1000	14 3/8	6 3/8	3 15/16	6 5/16	6 1/16	6 1/16	5 9/16	1/2	1/2	12 13/16	18 7/8	3/4

with AUXILIARY SWITCH	
J1	J2
13 3/16	19 1/4

MECHANICAL INTERLOCK with 45° TERMINALS												
Amps	A2	B	C2	D2	E2	F2	G	H	I	J1	J2	K
800-1000	14 3/8	6 3/8	5 1/2	7 7/8	6 1/16	6 1/16	5 9/16	1/2	1/2	14 3/8	20 7/16	3/4

BASIC SWITCH with 90° TERMINALS												
Amps	A3	B	C3	D3	E3	F3	G	H	I	J1	J2	K
800-1000	12 3/16	5 1/2	5 3/16	7 3/16	5 9/16	5 9/16	5 13/16	1/2	1/2	13 1/4	19 5/16	3/4

with AUXILIARY SWITCH	
J1	J2
13 1/4	19 5/16

MECHANICAL INTERLOCK with 90° TERMINALS												
Amps	A3	B	C3	D3	E3	F3	G	H	I	J1	J2	K
800-1000	12 3/16	5 1/2	6 3/4	8 3/4	6 1/16	6 1/16	4 9/16	1/2	1/2	14 7/8	20 7/8	3/4