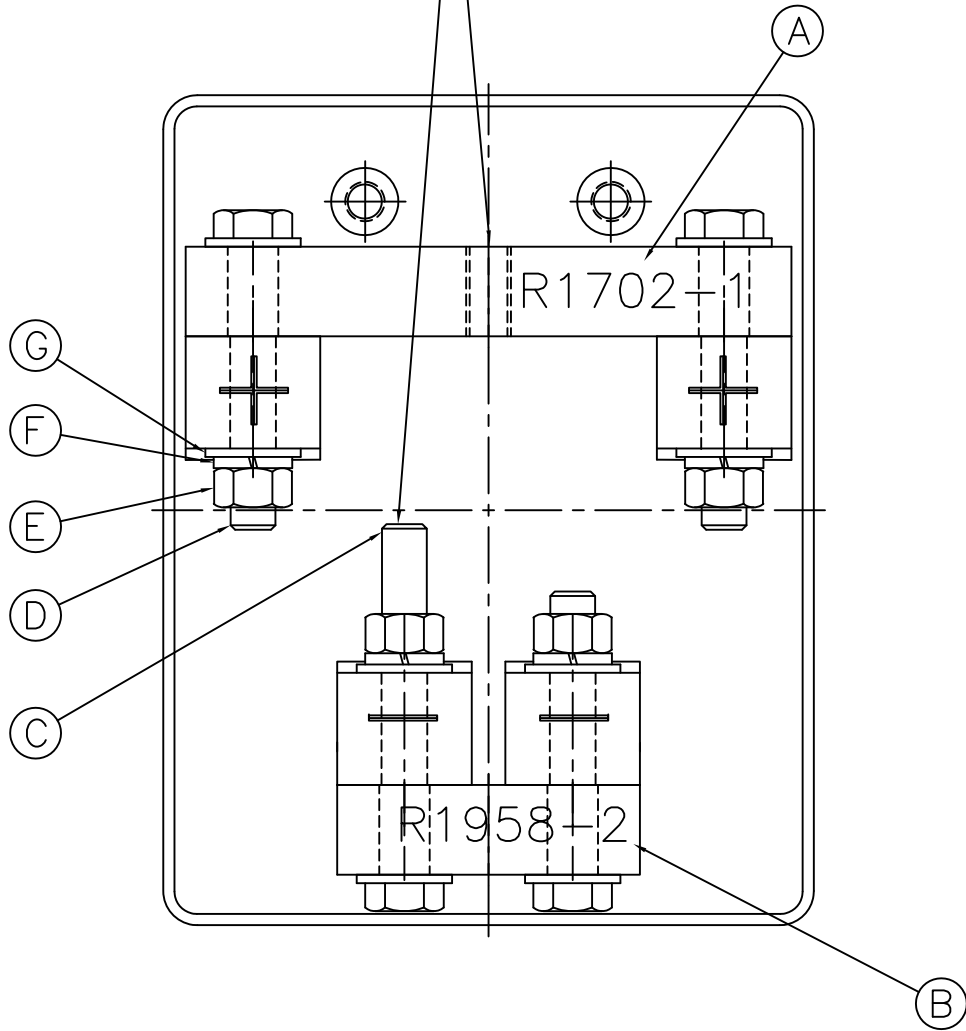


PART NO.	ITEM	DWG NO.	QTY	NAME	SIZE	MATERIAL
R1702-1	A	R1702-1	1	PARALLEL BAR	(1 x 1 1/2 x 6 3/4	PC CU)
R1958-2	B	R1958-2	1	PARALLEL BAR	(1 x 1 1/2 x 3 3/8	PC CU)
50293	C	-	1	HEX HD. SCREW	1/2-13 X 4	ST'LS STL.
50281	D	-	3	HEX HD. SCREW	1/2-13 X 3 1/4	ST'LS STL.
50253	E	-	4	HEX NUT	1/2-13	ST'LS STL.
50251	F	-	4	LOCK WASHER	1/2"	ST'LS STL.
50245	G	-	8	FLAT WASHER	1/2"	ST'LS STL.

CUSTOMER CONNECTIONS
 USE 1/2-13 HOLE &
 THE LONGER 1/2-13 BOLT



D	REVISED PARALLEL BARS TO SHOW DRAWING CHANGE	DLK/SFR	09MAR04
C	ITEM 'A' WAS R1958-1	RB	20Jul01
B	ADDED ASSEMBLY & BOM	BTK/KLY	05Jun01
A	REDRAWN ON AUTOCAD - RB		9Jan95
REV	DESCRIPTION		DATE

SCALE: FULL	APPROVED BY:	DRAWN BY: RB
DATE: 1-12-89		REVISED:
PARALLEL BAR ASS'Y KIT		
RWMA STAG.		DRAWING NUMBER: R1958