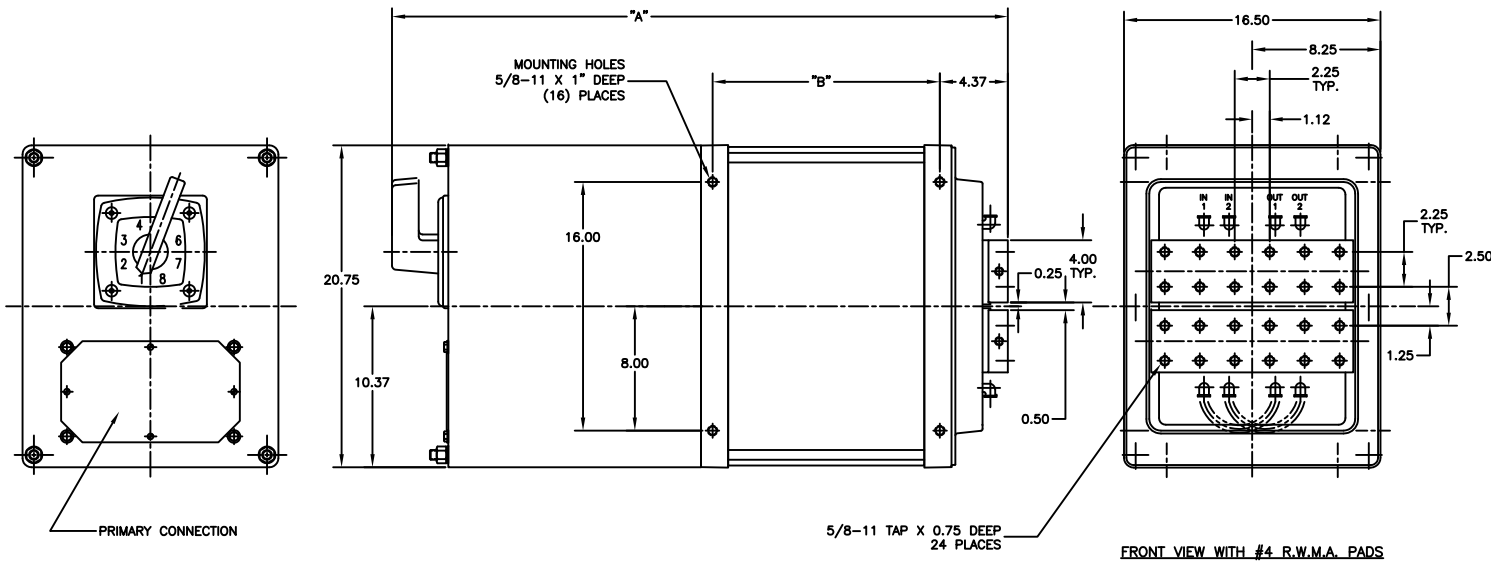
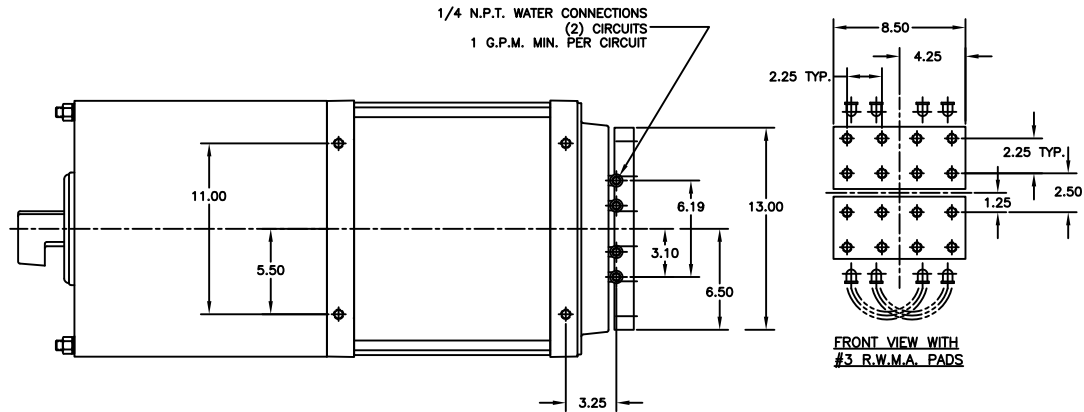


FRAME LETTER	DIM "A"	DIM "B"
U	39.62	14.62
UA	40.62	15.62



MACHINE TYPE TRANSFORMER  
TAP SWITCH: END MOUNT  
FRAME CROSS SECTION: 16.50" X 20.75"

DRAWING NO. R1285  
DATE: OCT. 1982

REV. C  
JUNE 1999

C	REVISED PCB, REMOVED 5/8 HEX NUTS & WASHERS	17Aug11
B	CHANGE FRACTIONS TO DECIMALS	28Jun09
A	CHANGED OVER TO CAD	28Jan98
REV	DESCRIPTION	DATE
<small>THIS DRAWING AND ALL THE INFORMATION AND TECHNOLOGY IS IT IS ARE EXCLUSIVE, CONFIDENTIAL AND PROPRIETARY TO ROMM INC. THIS DRAWING IS OWNED BY ROMM INC. AND NO PARTS THEREOF MAY BE REPRODUCED OR TRANSMITTED IN ANY FORM OR BY ANY MEANS, ELECTRONIC OR MECHANICAL, INCLUDING PHOTOCOPYING, RECORDING, OR BY ANY INFORMATION STORAGE AND RETRIEVAL SYSTEM, WITHOUT THE WRITTEN PERMISSION OF ROMM INC. THIS DRAWING IS INTENDED FOR USE ONLY FOR THE SPECIFIC PURPOSES FOR WHICH IT IS DESIGNED AND ONLY TO THE EXTENT OF ROMM INC. AND IT AND ANY COPIES, AND IT IS NOT TO BE USED FOR ANY OTHER PURPOSES WITHOUT THE WRITTEN PERMISSION OF ROMM INC.</small>		
SCALE:	NONE	DRAWN BY: BK
DATE:	29Jan98	REVISED:
CATALOG DRAWING		
"U" FAMILY MACHINE TYPE		DRAWING NUMBER R1285