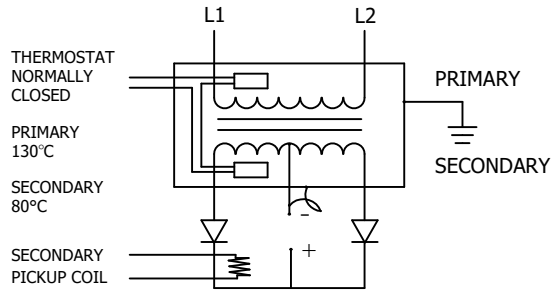
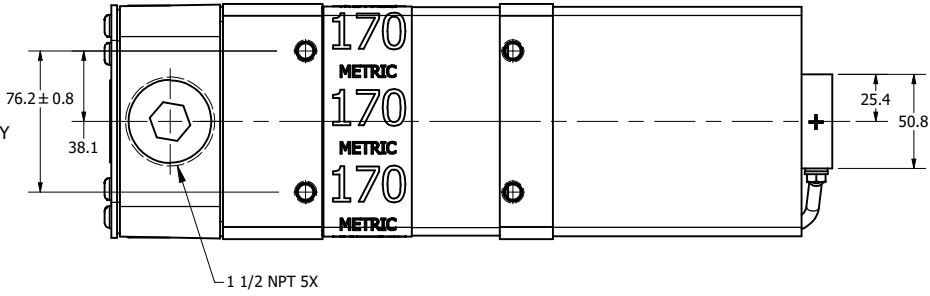


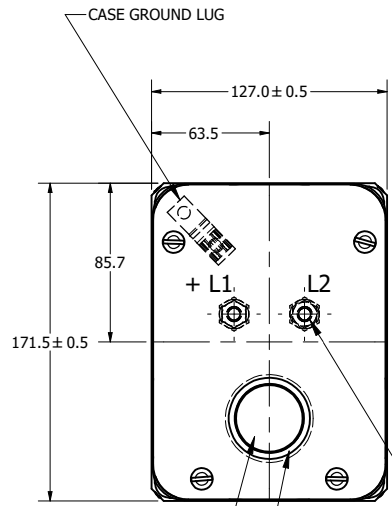
ROMAN MODEL	KVA @ 50% DUTY CYCLE	PRI V/ FREQ	V/SEC	TURNS RATIO	DIM "A"	DIM "B"	WEIGHT/ LBS (KG)	MAX. Δ P.	FLOW RATE
TDC-7224	170	650/1000	13.0	50:1	389.2	111.8	60 (27.2)	14 PSI (.96 BAR)	7.5 LPM



TRANSFORMER CASE MUST BE GROUNDED. TRANSFORMER WILL BE SHIPPED WITH A JUMPER CONNECTING SECONDARY CENTER TAP TO CASE. USER MUST PROVIDE APPROPRIATE GROUNDING OF SECONDARY CIRCUIT. FOR APPLICATIONS ABOVE A 20% DUTY CYCLE, CONTACT ROMAN MANUFACTURING FOR ASSISTANCE.



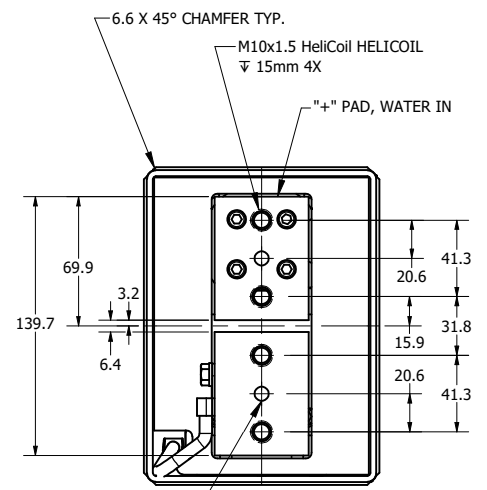
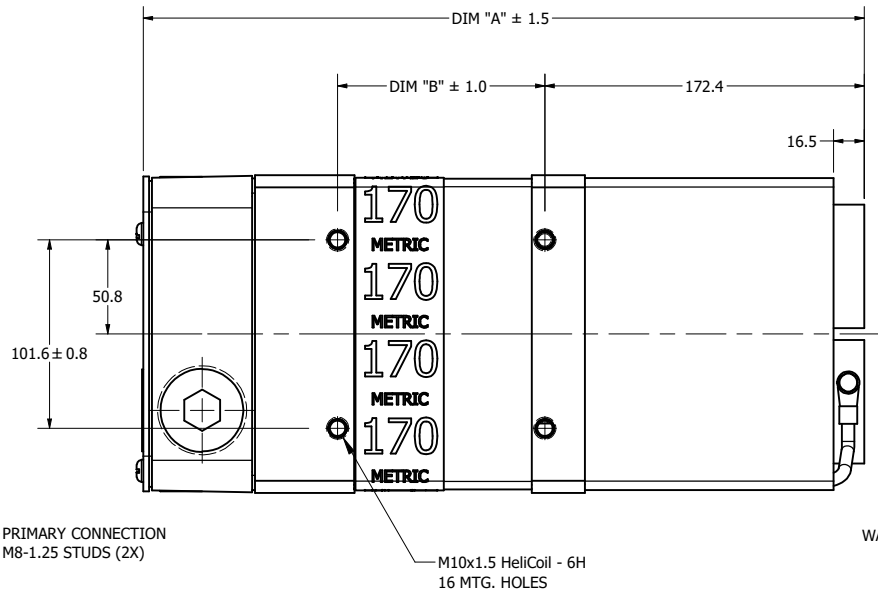
NOTE\*  
The secondary terminals of this device are intended as an electrical connection only. Applications must be designed to minimize any forces applied to the secondary terminals, this can be accomplished by transferring forces to a structural member.



SECONDARY PICK-UP COIL

OVER TEMPERATURE SENSING LEADS

PRIMARY CONNECTION M8-1.25 STUDS (2X)



WATER CONNECTION (2X) USE 10mm I.D. O-RING 30°C MAX. INLET TEMP.

C	DIM "A" WAS 392.3, DIM "B" WAS 115.0, WEIGHT WAS 59 (26.8)	RB	BCC	12/29/2017
B	DIM "A" WAS 393.7 PER ECR 221	JCB	KLY	5/22/2015
A	REVISED KVA, WAS 185KVA	BCC	KLY	1/31/2013

REV DESCRIPTION DATE

© 2017 Copyright RoMan Manufacturing. THIS DRAWING AND ALL THE INFORMATION AND TECHNOLOGY IN IT ARE EXCLUSIVE, CONFIDENTIAL AND PROPRIETARY TO RoMan MANUFACTURING, INC. THIS DRAWING IS OWNED BY RoMan MANUFACTURING, INC., AND UNLESS SPECIFICALLY AUTHORIZED IN WRITING, NO COPIES SHALL BE MADE OF THIS DRAWING, AND SHALL BE USED ONLY FOR THE LIMITED PURPOSE FOR WHICH IT IS DISCLOSED AND ONLY TO THE BENEFIT OF RoMan MANUFACTURING, INC. AND IT AND ANY COPIES, AUTHORIZED OR NOT, SHALL BE IMMEDIATELY RETURNED UPON ANY REQUEST THEREFORE.

SCALE:	HALF	DETAILER:	bconner
DATE:	11/21/2012	DESIGNER:	bconner
		APPROX WEIGHT:	60.1 lbmass

POWER SUPPLY

PHYSICAL DRAWING	DRAWING NUMBER:
	7224-1

ALL DIMENSIONS IN MM