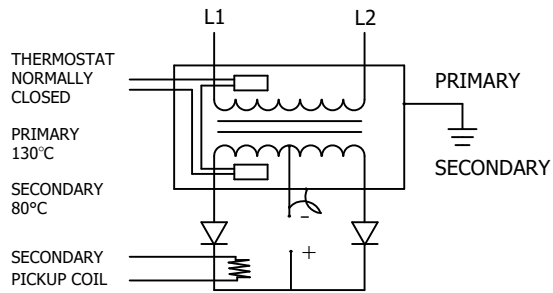
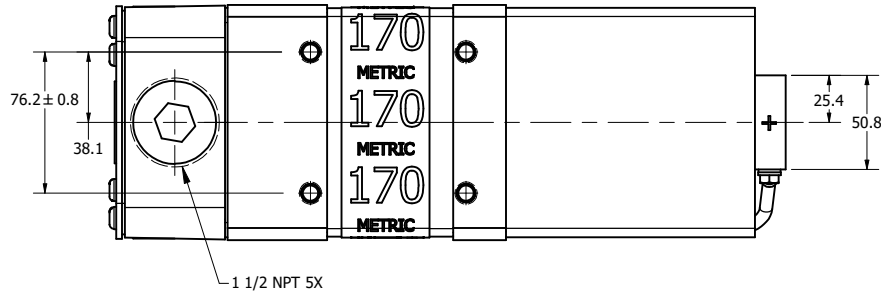


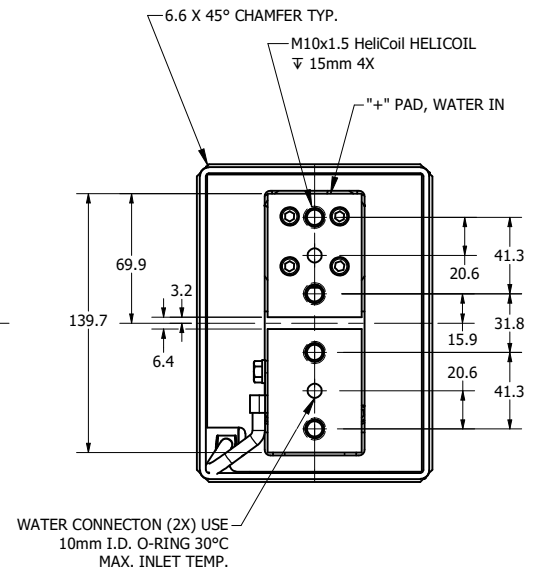
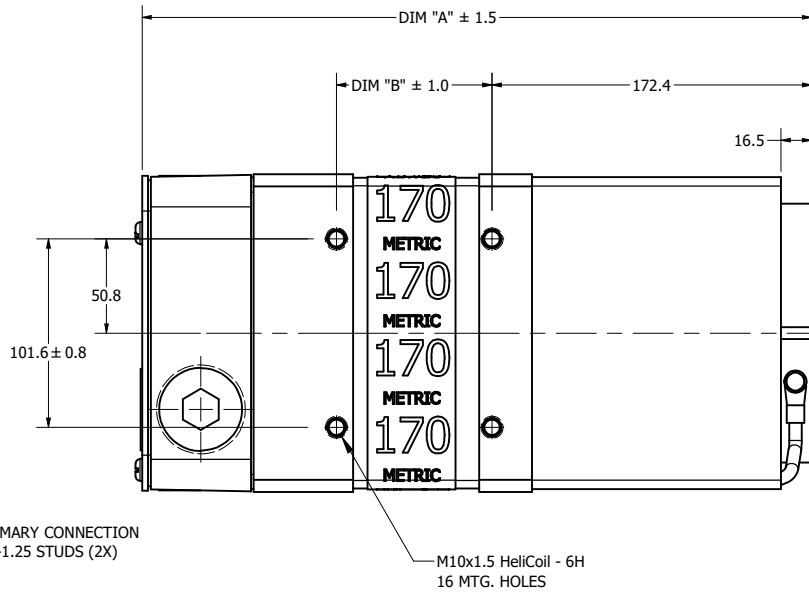
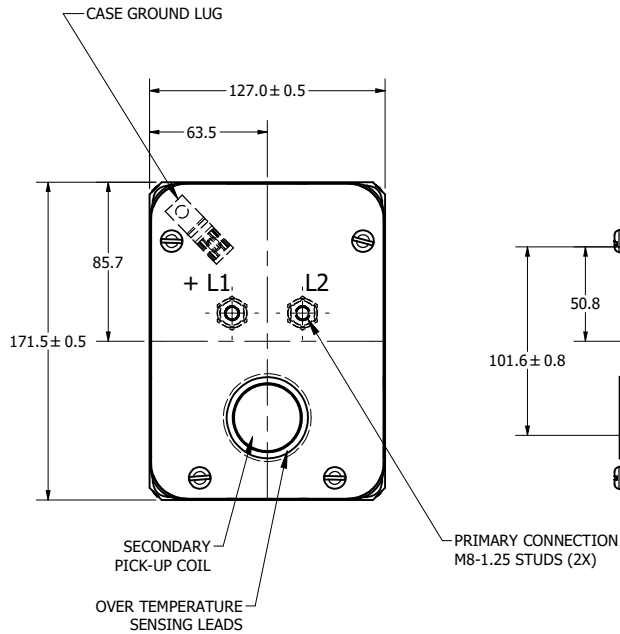
ROMAN MODEL	KVA @ 50% DUTY CYCLE	PRI V/ FREQ	V/SEC	TURNS RATIO	DIM "A"	DIM "B"	WEIGHT/ LBS (KG)	MAX. Δ P.	FLOW RATE
TDC-7660	170	650/1800	13.0	50:1	361.3	84.0	53.4 (24.2)	14 PSI (.96 BAR)	7.5 LPM
TDC-7779	170	500/1800	13.1	38:1	361.3	84.0	53.4 (24.2)	14 PSI (.96 BAR)	7.5 LPM



TRANSFORMER CASE MUST BE GROUNDED. TRANSFORMER WILL BE SHIPPED WITH A JUMPER CONNECTING SECONDARY CENTER TAP TO CASE. USER MUST PROVIDE APPROPRIATE GROUNDING OF SECONDARY CIRCUIT. FOR APPLICATIONS ABOVE A 20% DUTY CYCLE, CONTACT ROMAN MANUFACTURING FOR ASSISTANCE.



NOTE\*  
The secondary terminals of this device are intended as an electrical connection only. Applications must be designed to minimize any forces applied to the secondary terminals, this can be accomplished by transferring forces to a structural member.



APPROVED BY: \_\_\_\_\_

DATE: \_\_\_\_\_

ALL DIMENSIONS IN MM

REV	DESCRIPTION	DATE
A	ADDED TDC-7779	3/14/2016

© 2015 Copyright RoMan Manufacturing. THIS DRAWING AND ALL THE INFORMATION AND TECHNOLOGY IN IT ARE EXCLUSIVE, CONFIDENTIAL AND PROPRIETARY TO RoMan Manufacturing, INC. THIS DRAWING IS OWNED BY RoMan Manufacturing, INC., AND UNLESS SPECIFICALLY AUTHORIZED IN WRITING, NO COPIES SHALL BE MADE OF THIS DRAWING, AND SHALL BE USED ONLY FOR THE LIMITED PURPOSE FOR WHICH IT IS DISCLOSED AND ONLY TO THE BENEFIT OF RoMan Manufacturing, INC. AND IT AND ANY COPIES, AUTHORIZED OR NOT, SHALL BE IMMEDIATELY RETURNED UPON ANY REQUEST THEREFORE.

SCALE: HALF	DESIGNER: psalamone
DATE: 3/14/2016	APPROX WEIGHT: N/A

DETAILER: bconnor

**RoMan**  
MANUFACTURING

**POWER SUPPLY ASSEMBLY**

PHYSICAL DRAWING

DRAWING NUMBER: 7660-1