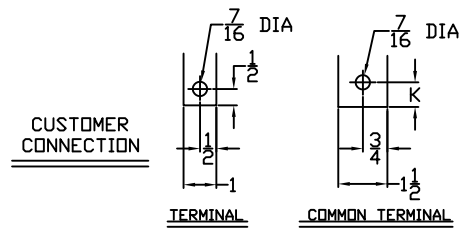


Δ MECHANICAL INTERLOCK: PULL KNOB BEFORE OPERATING MAIN HANDLE. KNOB ACTIVATES A SPDT AUXILIARY SWITCH - 15 A AT 480 VAC.



BASIC SWITCH with STRAIGHT TERMINALS										
Amps	A1	B	C1	D1	G	H	I	J	K	
100-600	10	4 5/16	1 15/16	3 13/16	5 1/2	1/4	1/4	4 7/16	3/4	

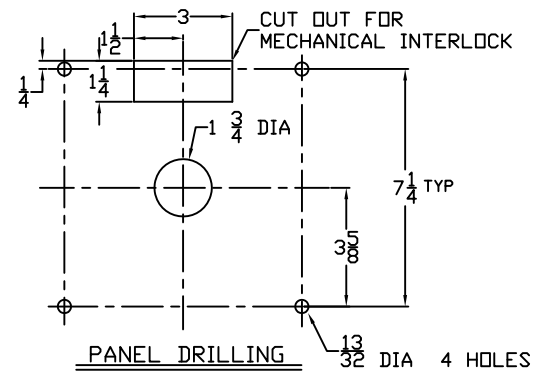
with AUXILIARY SWITCH
J
5 5/16

MECHANICAL INTERLOCK with STRAIGHT TERMINALS										
Amps	A1	B	C1	D1	G	H	I	J	K	
100-600	10	4 5/16	3 1/2	5 3/8	5 1/2	1/4	1/4	6	3/4	

BASIC SWITCH with 45° TERMINALS										
Amps	A2	B	C2	D2	G	H	I	J	K	
100-600	10 1/8	4 9/16	4 1/16	5 5/16	5 3/16	1/4	1/4	5 5/16	3/4	

with AUXILIARY SWITCH
J
5 5/16

MECHANICAL INTERLOCK with 45° TERMINALS										
Amps	A2	B	C2	D2	G	H	I	J	K	
100-600	10 1/8	4 9/16	5 5/8	6 7/8	5 3/16	1/4	1/4	6 7/8	3/4	



BASIC SWITCH with 90° TERMINALS										
Amps	A3	B	C3	D3	G	H	I	J	K	
100-600	8 1/8	3 7/8	4 7/16	5 3/16	5	1/4	1/4	5 1/8	3/4	

with AUXILIARY SWITCH
J
5 5/16

MECHANICAL INTERLOCK with 90° TERMINALS										
Amps	A3	B	C3	D3	G	H	I	J	K	
100-600	8 1/8	3 7/8	6	7	5	1/4	1/4	7	3/4	