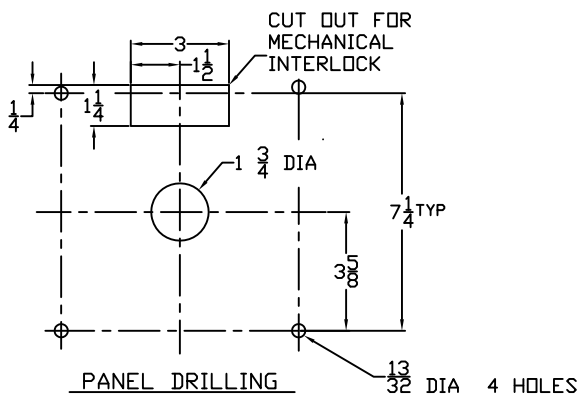
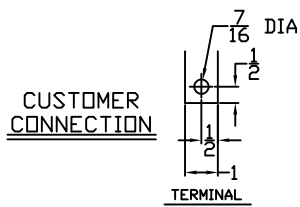


Δ MECHANICAL INTERLOCK: PULL KNOB BEFORE OPERATING MAIN HANDLE. KNOB ACTIVATES A SPDT AUXILIARY SWITCH - 15 A AT 480 VAC.



BASIC SWITCH with STRAIGHT TERMINALS						
Amps	A1	B	C1	I	J	
100-600	10	4 5/16	1 15/16	1/4	4 5/8	

with AUXILIARY SWITCH	
J	
5 1/4	

MECHANICAL INTERLOCK with STRAIGHT TERMINALS						
Amps	A1	B	C1	I	J	
100-600	10	4 5/16	3 1/2	1/4	6 3/16	

BASIC SWITCH with 45° TERMINALS						
Amps	A2	B	C2	I	J	
100-600	10 1/8	4 9/16	4 1/16	1/4	4 5/8	

with AUXILIARY SWITCH	
J	
5 1/4	

MECHANICAL INTERLOCK with 45° TERMINALS						
Amps	A2	B	C2	I	J	
100-600	10 1/8	4 9/16	5 5/8	1/4	6 3/16	

BASIC SWITCH with 90° TERMINALS						
Amps	A3	B	C3	I	J	
100-600	8 1/8	3 7/8	4 7/16	1/4	4 5/8	

with AUXILIARY SWITCH	
J	
5 1/4	

MECHANICAL INTERLOCK with 90° TERMINALS						
Amps	A3	B	C3	I	J	
100-600	8 1/8	3 7/8	6	1/4	6 3/16	