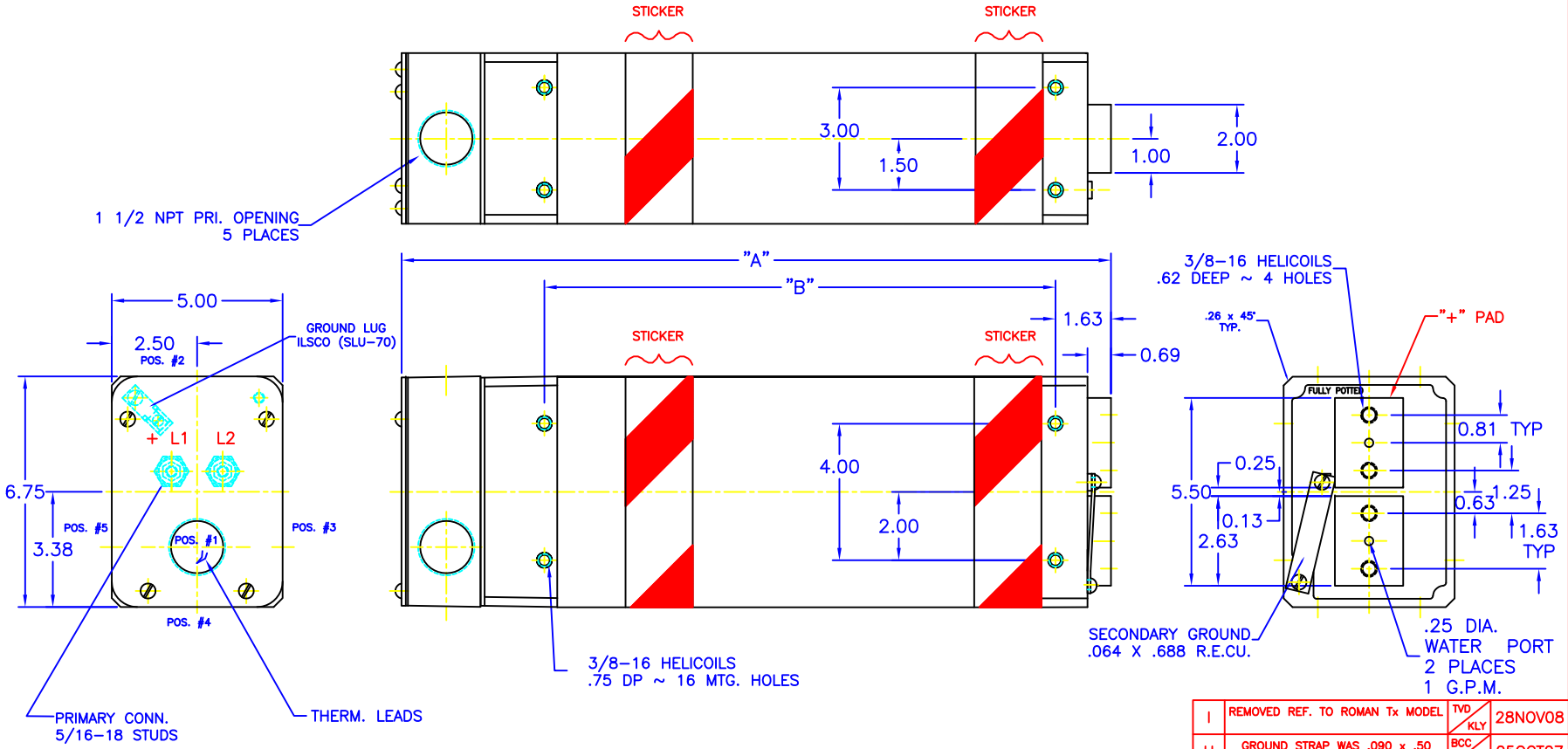


GM SPEC	KVA	SEC.VOLTAGE	DIM "A"	DIM "B"	URNS RATIO	WEIGHT (LBS)	IMPEDANCE* 70°C
TRU81BX	93	10.90	16.75	11.00	88:2	89	155 + j71
TRC81BX	93	11.05	16.75	11.00	104:2	89	155 + j71
TRU82BX	136	16.00	20.75	15.00	60:2	119	207 + j88
TRC82BX	136	16.19	20.75	15.00	71:2	119	207 + j88

*MICRO-OHMS REFERRED TO THE SECONDARY



NOTE*

The secondary terminals of this device are intended as an electrical connection only. Applications must be designed to minimize any forces applied to the secondary terminals, this can be accomplished by transferring forces to a structural member.

I	REMOVED REF. TO ROMAN Tx MODEL	TVD KLY	28NOV08
H	GROUND STRAP WAS .090 x .50	BCC KLY	05OCT07
G	.26 x 45° CHAMFER WAS 7/16 RADII	BCC KLY	15AUG06

REV	DESCRIPTION	DATE
-----	-------------	------

<small>THIS DRAWING AND ALL THE INFORMATION AND TECHNOLOGY IN IT ARE EXCLUSIVE, CONFIDENTIAL AND PROPRIETARY TO ROMAN INC. THIS DRAWING IS OWNED BY ROMAN INC. AND UNLESS SPECIFICALLY AUTHORIZED BY WRITING, NO COPIES SHALL BE MADE OF THIS DRAWING, AND SHALL BE USED ONLY FOR THE LIMITED PURPOSE FOR WHICH IT IS DISCLOSED AND ONLY TO THE BENEFIT OF ROMAN INC. ANY IT AND ANY COPIES, AUTORIZED OR NOT, SHALL BE IMMEDIATELY RETURNED UPON ANY REQUEST THEREOF.</small>		<small>SCALE: NONE</small> <small>DATE: 27Feb01</small>	<small>DRAWN BY: BK</small> <small>REVISED:</small>
--	--	--	--

PHYSICAL DRAWING	
DRAWING NUMBER:	3724-1

F	ADDED "B" TO GM SPEC NUMBERS	RB SFR	21Jun05
E	REMOVED "BURNDY" LUGS FROM PRIMARY END	TVD SFR	30JUNE04
D	REMOVED NOTE FOR SILVER-PLATING	BK SFR	04Nov02
C	ADDED NOTE ON PAD LOADING	BJD SFR	19Apr02
B	CORRECTED TURNS RATIO :2	BTK KLY	02Jan02
A	ADDED RED & WHITE STRIPED STICKERS TO DRAWING	BTK SFR	05Mar01