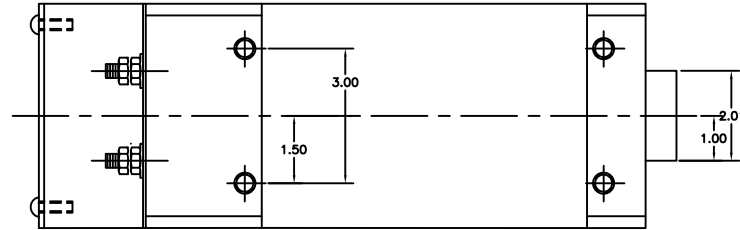
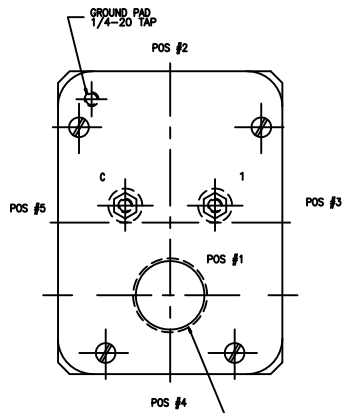


KVA	CHRYSLER STD. NO.	ROMAN MODEL NUMBER	PRI. VOLTS	COLOR	SEC. VOLTAGE	DIM "A"	DIM "B"	WEIGHT
35	91-901-0350	T46635SA1KUWX	460V 60HZ	SAFETY BLUE	4.00	13.75	8.00	65#
50	91-901-0500	T46650SB1KUWX	460V 60HZ	SAFETY BLUE	5.00	15.25	9.50	74#
65	91-901-0650	T46665SC1KUWX	460V 60HZ	STNLS STL	6.05	16.75	11.00	94#
80	91-901-0800	T46680SD1KUWX	460V 60HZ	SAFETY BLUE	7.30	19.00	13.25	105#
90	91-901-0900	T46690SE1KUWX	460V 60HZ	BLACK	8.52	20.75	15.00	113#

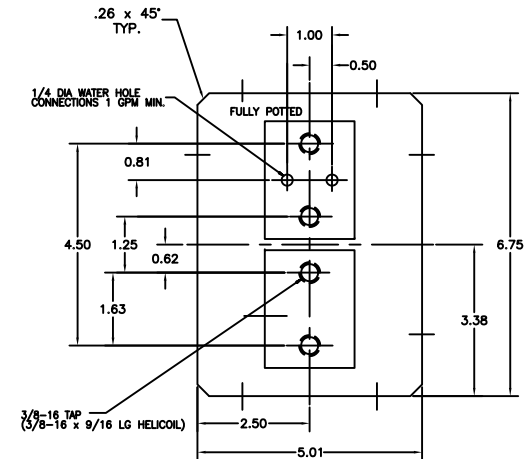
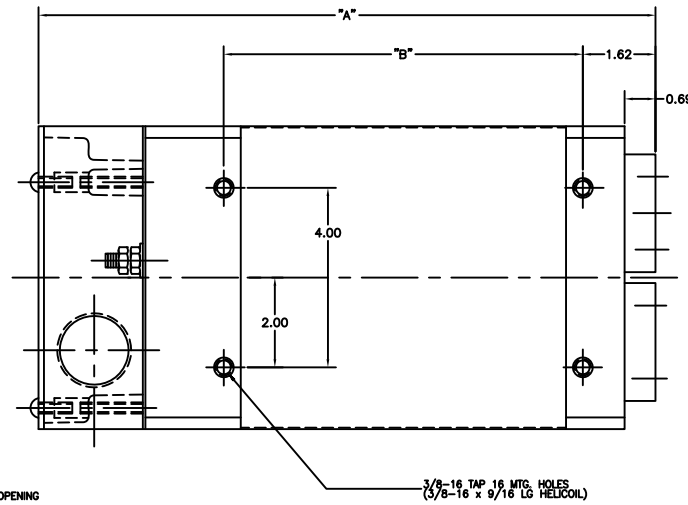


NOTE*

The secondary terminals of this device are intended as an electrical connection only. Applications must be designed to minimize any forces applied to the secondary terminals, this can be accomplished by transferring forces to a structural member.



1 1/4 NPT PRIMARY OPENING
LOCATION OPTIONAL
* INDICATE PRIMARY EXIT LOCATION BY SPECIFYING TRANSFORMER MOD. NO. & THEN ADDING 1,2,3,4, OR 5



J	T46665SC1KUWX COLOR WAS SAFETY BLUE	JCB KLY	12NOV12
H	REVISED COLORS ON TABLE TO SHOW ROMAN COLORS	JCB KLY	17MAY12
G	.26 x 45' CHAMFER WAS 7/16 RADII	BCC KLY	15AUG06
REV	DESCRIPTION		DATE

THIS DRAWING AND ALL THE INFORMATION AND TECHNOLOGY IN IT ARE EXCLUSIVE, CONFIDENTIAL AND PROPRIETARY TO ROMAN MFG. INC. THIS DRAWING IS OWNED BY ROMAN MFG. INC. AND UNLESS SPECIFICALLY AUTHORIZED IN WRITING, NO COPIES SHALL BE MADE OF THIS DRAWING, AND SHALL BE USED ONLY FOR THE LIMITED PURPOSE FOR WHICH IT IS DISCLOSED AND ONLY TO THE BENEFIT OF ROMAN MFG. INC., AND IT AND ANY COPIES, AUTHORIZED OR NOT, SHALL BE IMMEDIATELY RETURNED UPON ANY REQUEST THEREFORE.

SCALE: NONE DATE: 10/8/87 DRAWN BY: SRE WEIGHT:

ROBOT Tx ASSEMBLY
(PHYSICAL DWG.) DRAWING NUMBER: R1426